

# PRO-TECH SNO PUSHER®

**IST® LOADER (ISL), BACKHOE  
(ISB) & SKIDSTEER (ISS) MODELS**



## Operating your ISL, ISB or ISS Unit

To ensure your unit will provide you with years of service with minimal maintenance follow these simple instructions:

1. Once the Sno Pusher is properly attached to your machine it **MUST** be leveled **BEFORE** plowing.
2. To level the unit set it down and adjust the curl of your bucket, making sure that **BOTH** wear shoes are resting squarely on your plowing surface. In addition, Pro-Tech also sells a level gauge that assists in keeping the unit level.
3. To ensure proper contact drive your machine forward approximately 20', check surface area under your machine to ensure that plowing area is clean. If your plowing area is not completely clear, feel free to loosen the tension of binder(s) to allow your Sno Pusher to vertically adjust for maximum surface contact.

**IMPORTANT: Binders must be properly tightened prior to transportation or high speed use for ISL and ISB models.**

4. DO NOT apply down force to the unit while plowing. This will considerably shorten the life of your wear shoes and could do significant damage to your plowing surface with the steel edge.
5. DO operate your machine in the float position. The IST® Sno Pusher's steel trip mechanism is designed for use with the bucket in float. If not in float, the unit may not trip properly over obstacles and could result in damage to the pusher and/or the plowing surface.

# USER'S GUIDE

**IST® Loader (ISL), Backhoe (ISB) & Skidsteer (ISS)**

# Attaching your Sno Pusher ISL & ISB Models

Attaching the Sno Pusher to your machine is made easy with Pro-Tech's Quick Change™ Design.

1. Drive the cutting edge of machine's bucket into the post receptacle on the back of the Sno Pusher. (Figure 1)

The bucket will come to rest against the 12" structural steel channel reinforcement. The upper posts will fit inside the bucket and should be centered. The lower posts will be positioned under the bucket.

2. Attach the chains and binders to secure the Sno Pusher to your machine.

## Installing the Binder Kit

1. Grab hooks are to be welded to the side or back corners of your machine's bucket.

The location you choose MUST allow chains to be positioned parallel to the ground when attached. This will ensure easy centering of the Sno Pusher to your machine.

2. Attach one section of transport chain to the right side of the Sno Pusher using a 3/8" clevis.

Drop opposite end of this chain into grab hook on the right side of the bucket. Leave enough slack in the chain to allow centering of the unit.

3. Attach additional section of transport chain to the left side of the Sno Pusher using a 3/8" clevis. (Figure 2)

Drop opposite end of this chain into grab hook on the left side of the bucket. Leave enough slack in the chain to attach the ratchet binder and allow centering of the unit.

4. Now that both chains are in place, lift the Sno Pusher off the ground by raising the bucket then tighten the ratchet binder.

Add or remove slack in the chains to center the Sno Pusher on your machine. Once centered, chains MUST be tightened with the binders.

**CAUTION:** Do not use the lift hooks located at the top and rear of the Sno Pusher for chain attachment. These hooks are designed for lifting the unit only and not for plowing.

### ***For ISL, Binder Kit Includes:***

2 – 10' sections of 3/8" P-70 Transport Chain

2 – 5/16" Grab Hooks

1 – 3/8" CM Heavy Duty Ratchet Binder

2 – 3/8" Clevis Attachments

### ***For ISB, Binder Kit Includes:***

2 – 5' sections of 3/8" P-70 Transport Chain

2 – 5/16" Grab Hooks

1 – 3/8" CM Heavy Duty Ratchet Binder

2 – 3/8" Clevis Attachments



**Figure 1**

# Attaching your Sno Pusher ISS Model

Your Pro-Tech Sno Pusher® Skidsteer Model (ISS) is equipped with the manufacturer's OEM Quick Coupler

1. Remove the bucket from your skid-steer
2. Drive machine into the adapter located on the back of the Sno Pusher.
3. Engage the locking pins.



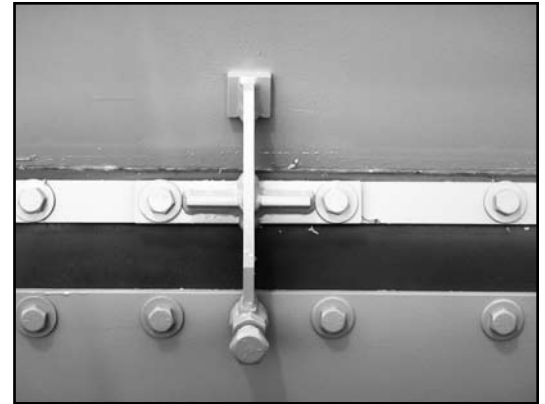
**Figure 2**

## Maintenance

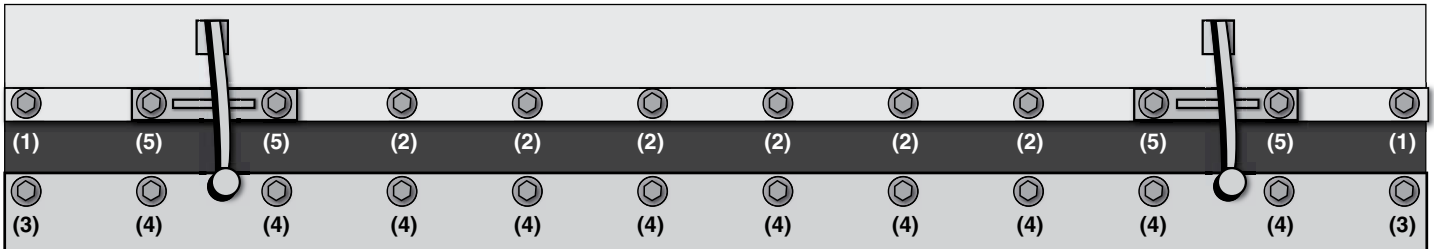
Your Pro-Tech Sno Pusher® requires only minimal service to remain in top condition. Follow these simple guidelines to ensure proper plowing and long life.

## Installing Poly Spring, Cutting Edge and Tensioner

- Affix poly spring to lower edge of unit using 3/4" hardware and 2" wide hold down. Place tensioners in proper locations using 3/4" hardware. Do not tighten any hardware at this stage.
- Affix steel cutting edge to bottom of poly spring using 3/4" hardware. Do not tighten hardware at this stage.
- Begin tightening all hardware using the following procedure and torque specifications:



**Figure 3**



**STEP:**

- (1) Tighten first at 130 ft/lb
- (2) Tighten second at 160 ft/lb
- (3) Tighten third at 130 ft/lb

**STEP:**

- (4) Tighten fourth at 160 ft/lb
- (5) Tighten fifth at 240 ft/lb

*NOTE: Check for proper torque at all locations upon completion of step 5. Especially at locations labeled (1).*

## ADJUSTING THE TENSIONERS

The steel cutting edge comes adjusted to the proper tension from the factory. Once cutting edges are properly broke in, i.e. a sharp leading edge or as cutting edges wear, it may be necessary to adjust tensioners (shown in figure 3) to maintain proper cutting edge down force. To adjust the tensioners loosen the jam nut and turn adjusting screw clockwise to force the cutting edge down and into contact with the plowing surface. Do not over adjust, cutting edge should be even with bottom of the wear shoes. Additionally, if too much down force is applied , through either the adjustment of tensioners or poly spring wear, the tensioners can be backed off to reduce down force. Adjust all tensioners equally.

## WEAR SHOES

Every Sno Pusher is equipped with two High-carbon Alloy Wear Shoes that are bolted-on and replaceable to provide seasons of use by offering superior protection against wear and tear. When replacement is required, follow these guidelines:

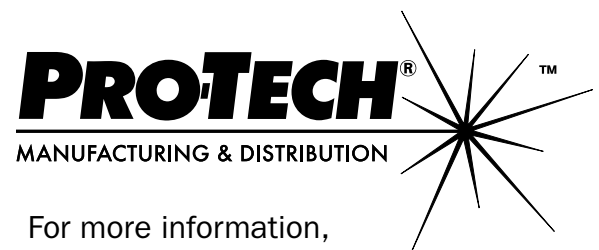
1. Raise your Sno Pusher off the ground and secure the unit under the lower, rear receptacle posts and the side plate reinforcement angles using dunnage or jack standards.
2. Loosen all six bolts fastening the wear shoe to the unit and carefully remove.

**IMPORTANT:** Wear shoes are very heavy, please use caution during the removal and installation.

3. Position new wear shoe on left side and right side.
4. Install bolts, washers and locking nuts. Tighten bolts slightly, only enough to ensure that they won't fall off.
5. Lower unit on level surface and torque bolts (120 ft-lb) securely into place.

### ***Be sure to always use Pro-Tech replacement parts.***

RP1000 – ISL Binder Kits  
RP1001 – ISB Binder Kits  
RP2016 – Standard wear shoe for ISL  
RP2036 – Heavy Duty wear shoe for ISL  
RP2057 – Super Duty wear shoe for ISL  
RP2017 – Standard wear shoe for ISB/ISS  
RP2037 – Heavy Duty wear shoe for ISB/ISS  
RP2058 – Super Duty wear shoe for ISB/ISS  
RP2700 – 6' Steel Cutting Edge for ISS  
RP2701 – 8' Steel Cutting Edge for ISS  
RP2702 – 10' Steel Cutting Edge for ISS/ISB/ISL  
RP2703 – 12' Steel Cutting Edge for ISS/ISB/ISL  
RP2704 - 14' Steel Cutting Edge for ISB/ISL  
RP2705 – 16' Steel Cutting Edge for ISL  
RP2706 – 18' Steel Cutting Edge for ISL  
RP2707 – 20' Steel Cutting Edge for ISL  
RP2708 – 24' Steel Cutting Edge for ISL  
RP2600 – 10' IST Spring ISB/ISL  
RP2601 – 12' IST Spring ISB/ISL  
RP2602 – 14' IST Spring ISB/ISL  
RP2603 – 16' IST Spring ISB/ISL  
RP2604 – 18' IST Spring ISB/ISL  
RP2605 – 20' IST Spring ISB/ISL  
RP2606 – 24' IST Spring ISB/ISL  
RP2607 – 6' IST Spring ISS  
RP2608 – 8' IST Spring ISS  
RP2609 – 10' IST Spring ISS  
RP2610 – 10' IST Spring ISS  
RP1200 – Level Gauge



For more information,  
please visit us at:  
[www.snopusher.com](http://www.snopusher.com)